

# LAN L Led::



EXTERIOR | LAN L

# Led:: LAN L

## Technical characteristics

Linear luminaire for urban roads with LED technology. Together with the tubular structure column, they form the Lan light point. Design: M. Gabàs, A. Ribas and C. Casamor.

Ideal for lighting streets, avenues, residential areas, pedestrian areas.

Luminaire for light point at 9.2m height.

Characteristic dimensions: 1800 x Ø194mm.

Maximum power 130W / Maximum flux 17169lm.

Composed of a tubular structure of extruded aluminum AA-6063T5 with low copper content (<0.1%). Horizontal fixing on LAN column with special female input.

Access to the equipment through the front cover, fixed to the body with M6 captive screws and silicone gasket.

Approximate weight of the luminaire: 20Kg. (for 3 UPS)

IP66 / IK09

Flat tempered glass diffuser.

Includes 2 or 3 UPS with high efficiency Leds in alternating arrangement.

It incorporates a COOL B dissipating plate for heat dissipation.

Set of independent lenses of our own design in optical PMMA with efficiency of up to 93%. Optionally, rear reflector for flux recovery in injected and aluminized PMMA with a high reflectivity index (95%). The wide range of lenses and reflectors available allows all photometric needs to be optimally solved.

Color temperature: 3000°K or 4000°K. Optionally for areas with environmental protection: 2200°K or 2700°K.

FHS < 0.1%.

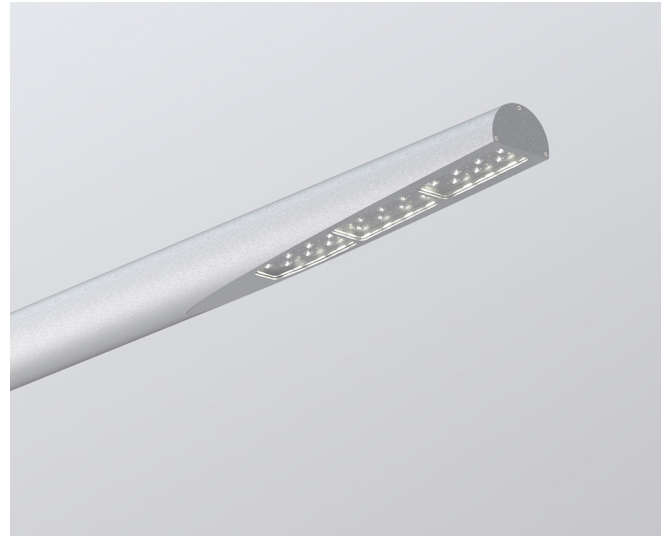
Minimum CRI 70.

Useful life: L90B10 > 100,000 h (consult depending on the type of LED and configuration).

AC voltage 220V-240V ~ 50/60Hz. Class I / Class II optional.

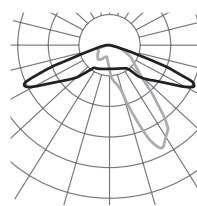
Color Silver Gray G2. Other colors available.

Standards: IEC 60598, IEC 62031, IEC 62471, IEC 60529, EN 55015, IEC 61000, IEC 61547, IEC 62493, IEC 62471, IEC 61437, IEC 62384, EN 50102, CE, ISO9001, ISO14001, ISO45001.

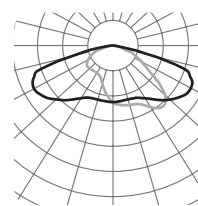


## Photometries

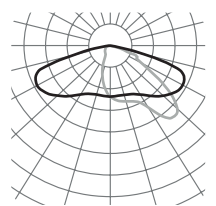
LONGITUDINAL NARROW F1M6



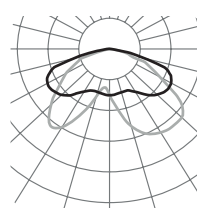
LONGITUDINAL F2M2



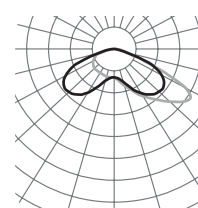
LONGITUDINAL F2MD



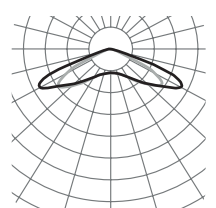
LONGITUDINAL WIDE F3M3



FRONT F4M2



SYMMETRICAL EXTENSIVE F5M1



Consult the product configurator for other options.

## Versions

PCB			3000K		4000K	
	mA	W	lm	lm/W	lm	lm/W
14M	350	55	8260	150	8820	160
	500	79	11200	141	12040	152
	500	79	11200	141	12040	152
21M	350	82	12390	151	13230	161
	500	117	16800	143	18060	154
	500	117	16800	143	18060	154
14Z	350	55	6720	122	7280	132
	500	79	9940	125	10640	134
	550	87	12040	138	12880	148
14X	350	#N/A	6720	0	7280	0
	500	#N/A	9940	0	10640	0
	550	#N/A	12040	0	12880	0
21Z	350	83	10080	121	10920	131
	500	118	14910	126	15960	135
	550	130	18060	138	19320	148

