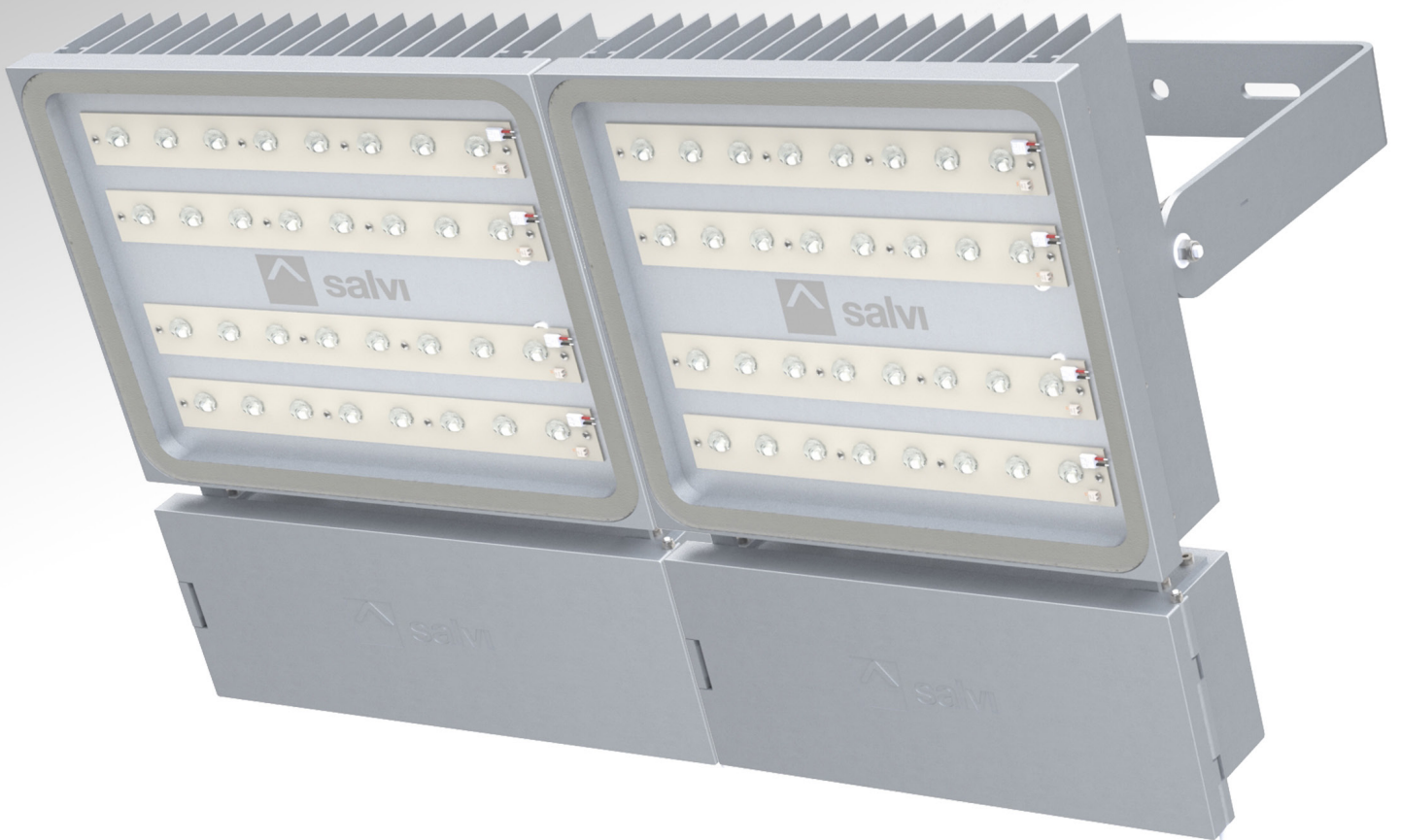


METRO XM ^{Led::}

METRO XM

EXTERIOR



Led:: METRO XM

Technical characteristics

Maximum efficiency projector. Manufactured with the highest quality materials, it guarantees a minimum operating cost. It allows the equipment to be installed in a thermally insulated casing from the luminaire, or remotely in a cabinet at the base of the column. Optionally, the Smartec remote control and monitoring system can be incorporated to facilitate maintenance and improve energy and operating costs.0

Ideal for lighting tunnels, large areas, sports and industrial spaces and airports, beaconing and signage.

To install from 4 to 25m high.

Characteristic dimensions: 514 x 810 x 105mm (without bracket).

Maximum power 900W at 1.5A / Maximum flux 108100lm at 1.2A.

Composed of an extruded AA-6063T5 aluminum dissipating body and an EN AC 44300 type aluminum case, both with low copper content (<0.1%). Fixation by means of an adjustable bracket to the wall or support.

Manual opening/closing for tool-free maintenance, closed silicone gasket, plate for fixing the driver and electronics in a separate compartment.

Approx. weight: 31Kg.

IP66 / IK08 / IK09 / IK10

Flat tempered glass diffuser.

64 or 128 high efficiency LEDs in linear arrangement.

The LEDs fixed to the main body transmit heat by conduction, and the cooling radiator integrated in the body dissipates heat to the outside by convection extremely efficiently.

Set of independent lenses of our own design in optical PMMA with efficiency of up to 93%. Optionally, rear reflector for flux recovery in injected and aluminized PMMA with a high reflectivity index (95%). The wide range of lenses and reflectors available allows all photometric needs to be optimally solved.

Color temperature: 3000°K or 4000°K. Optionally for industrial and sports facilities: 5000°K, 6000°K.

FHS < 0.1%.

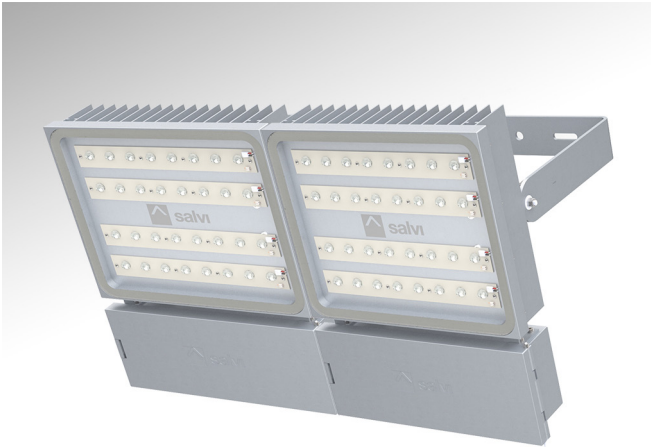
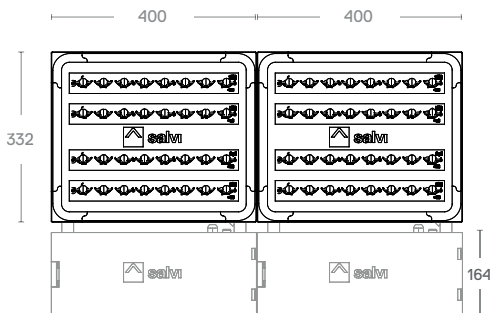
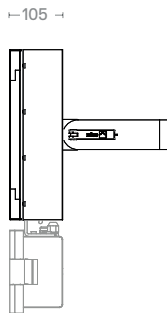
Minimum CRI 70.

Useful life: L90B10 > 100,000 h (consult depending on the type of LED and configuration).

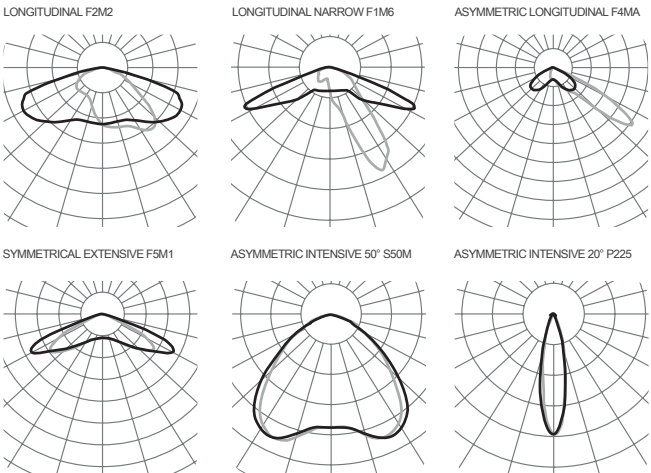
AC voltage 220V-240V ~ 50/60Hz. Class I / Class II optional.

Color Silver Gray G2. Other colors available.

Standards: IEC 60598, IEC 62031, IEC 62471, IEC 60529, EN 55015, IEC 61000, IEC 61547, IEC 62493, IEC 62471, IEC 61437, IEC 62384, EN 50102, CE, ISO9001, ISO14001, ISO45001.



Photometries



Consult the product configurator for other options.

Versions

PCB	3000K				4000K	
	mA	W	lm	lm/W	lm	lm/W
64R	350	253	37760	149	40320	159
	500	361	51200	141	55040	152
	1050	760	101120	133	108800	143
135	350	27	4810	178	4940	182
	500	39	6630	170	6890	176
	680	53	8710	164	9100	171
64W	350	248	30720	123	33280	134
	500	355	45440	128	48640	137
	1500	1066	113280	106	121600	114