

# SIL L Led::



EXTERIOR | SIL L

# Led:: SIL L

## Technical characteristics

Autonomous solar luminaire that incorporates all the elements in a single, slim and light geometry. Very efficient and resistant, it will supply light for more than 10 years with hardly any maintenance. Optionally incorporates a monitoring and remote control system. Design: L. Elizalde.

Ideal for lighting avenues, roads and highways.

To install from 7 to 12m high.

Characteristic dimensions: 2061 x 667 x 375 mm.

Maximum power 115W / Maximum flux 16800lm.

Composed of a body in extruded marine aluminum AA-6063T5, support in cast aluminum EN AC 44300, both with low copper content (<0.1%) and covers in ABS. Vertical / lateral fixing on male terminal Ø M120.

Access to the battery compartment and electronic equipment by captive M5 screws.

Approx. weight: 48Kg.

IP66 / IK09 (IK10 optical group).

PMMA diffuser with high impact resistance or flat tempered glass.

Optical group with 24 high-efficiency LEDs in a rectangular layout.

The LEDs attached to the main body transmit heat by conduction, and the body itself efficiently dissipates heat to the outside by convection.

Set of independent lenses of our own design in optical PMMA with efficiency of up to 93%. Optionally, rear reflector for flux recovery in injected and aluminized PMMA with a high reflectivity index (95%). The wide range of lenses and reflectors available allows all photometric needs to be optimally solved.

Color temperature: 3000°K or 4000°K. Optionally for areas with environmental protection: amber filter, 2200°K or 2700°K.

FHS < 0.1%.

Minimum CRI 70.

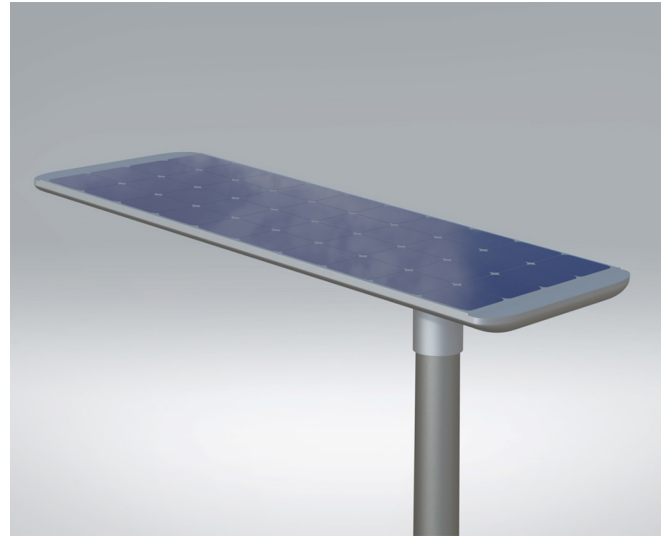
Useful life: L90B10 > 100,000 h (consult depending on the type of LED and configuration).

1200W/h capacity LiFePO4 battery. Battery voltage 12.8V. Solar panel power 240W. Class III.

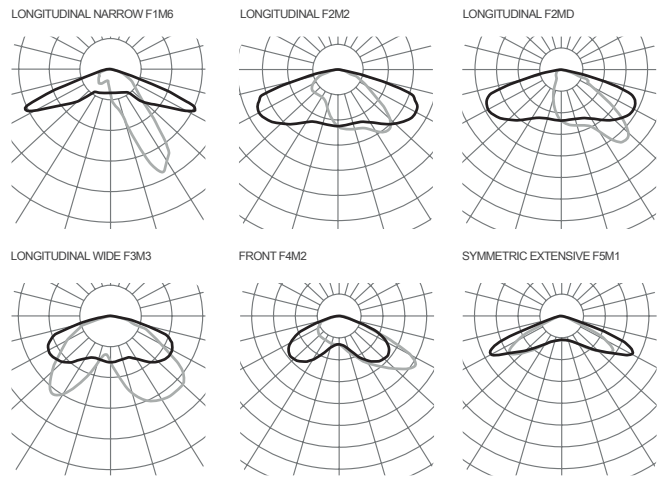
Color Silver Gray G2. Other colors available.

Standards: IEC60598, IEC 61347, IEC 61730, IEC 62031, IEC 62109, IEC 62133, IEC 62619, EN 50102, EN 55015, IEC 60529, IEC 61547, IEC 62031, IEC 62471, IEC 62493, CE.

ISO9001, ISO14001, ISO45001.



## Photometries



Consult the product configurator for other options.

## Versions

PCB	3000K		4000K	
	mA	W	lm	lm/W
24R	350	50	8880	177
	500	72	12240	170
	680	98	16080	164

